

Stillwater
MOTORS.COM
 BUICK • CHEVROLET • JEEP
 Family Owned Since 1922
 (651) 439-4333

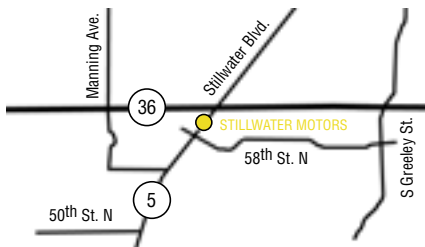
Prsrt Std
 US Postage
PAID
 Permit #1146
 St. Paul, MN

Sales: Monday-Thursday 8:30am – 9:00pm
 Friday 8:30am – 6:00pm
 Saturday 8:30am – 5:00pm

Parts & Service: Monday-Thursday 7:00am – 7:00pm
 Friday 7:00am – 6:00pm
 Saturday 8:00am – 4:00pm

Body Shop: Monday-Friday 7:00am – 5:30pm

Detail Shop: Monday-Thursday 7:00am – 7:00pm
 Friday 7:00am – 5:00pm
 Saturday 8:00am – 4:00pm



5900 Stillwater Boulevard North
 Stillwater, MN 55082

If you would like to receive an email copy of future newsletters,
 send an email to karena@stillwatermotors.com

26th ANNUAL
CAR GIVE-AWAY
 AT STILLWATER HIGH SCHOOL



STILLWATER MOTORS.COM
 CELEBRATING OUR 84TH ANNIVERSARY!
 SALES SERVICE BODY SHOP TOWING
 651.439.4333

Seniors can register to win at the Lock-in Party. CONGRATULATIONS!

1999

GM enters into an agreement with XM radio to bring satellite radio into its vehicles. OnStar announces that its services will be included in nearly one million **GM** vehicles by 2001.

2005

Stillwater Motors broke ground on the expansion program in September. The all new Chevy Aveo makes its world wide debut. **GM** announces its "GM Employee Discount for Everyone" marketing program in June.



2002

The corvette celebrates its 50th anniversary. Buick celebrates its 100th anniversary.

2004

A **GM** HydroGen 3 fuel cell prototype vehicle sets out on a new endurance record for fuel cell vehicles, driving a total distance of 6,200 miles.

2006

The first phase of **Stillwater Motors** expansion is complete. New service center opened on April 10th.



2007

Stillwater Motors will celebrate its 85th anniversary and the Grand Opening of the finished expansion.

* This information and more can be found on GM.com

THE ST. CROIX EDITION SUMMER '06

NOW IN STOCK!

2007 Chevrolet Avalanche

The New 2007 Chevrolet Avalanche offers power, efficiency, performance, safety and versatility. The 2007 Avalanche is the only vehicle that can change from a six-passenger SUV to a full-size pickup with seating for three and an eight-foot cargo bed. The next generation Vortec 5300 V8 engine is an evolutionary step in power, performance and efficiency. With Active Fuel Management from GM, power is delivered when you need it. The engine transitions seamlessly from eight cylinders



to four cylinders and back again. Standard on all Avalanche models, the StabiliTrak Electronic Stability Control System and OnStar. StabiliTrak improves vehicle stability, particularly during emergency maneuvers. With the added security of OnStar there before, during, and after an accident Avalanche offers the best of everything.

Don't Miss the 2006 Car Shows!

Camaro Club: June 10th; Corvette Show: August 19th; Buick Show: September 16th

GM & STILLWATER MOTORS MILESTONES

1922

Our First Year! Art Raduenz opened **Stillwater Motors**.

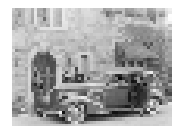


1934

The industries first barrier impact tests are conducted when **GM** cars are directed into a retaining wall at low speeds. **GM** was also the first to conduct a rollover test, running one side of a car up a ramp at the top of a hill.

1936

The Buick Roadmaster, a milestone in styling (designed by Harley Earl), is introduced.

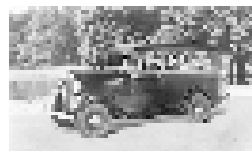


1923

Four-wheel brakes are introduced on 1924 model year Buicks.

1924

Stillwater Motors moves to its 324 Main St. location in Stillwater. Then President and Chairman of **GM**, Alfred Sloan said "The quickest way to profit is to serve the customer in the ways the customer wants to be served." This became the cornerstone of **Stillwater Motors** sales and service philosophy.



1935

Chevy introduces the Suburban Carryall, a half-ton truck with seating capacity for

1939

The industries first rear turn signals to use flashers are introduced by Buick. The industries first rear turn signals to use flashers are introduced by Buick.

THE ST. CROIX EDITION



NEW SERVICE CENTER IS OPEN!

Our new service center opened its doors to business on April 10th. The 50,000 square foot facility includes 2 drive-in service lanes, a customer lounge, and 35 in-ground service bays including two hoists for large utility trucks. Stillwater Motors service employees are all very happy to be in such a great facility. The next step in the project is to demolish the old service center to make it ready for sales. Stop in anytime and see how far the expansion has come with the first phase now complete. The final phase which will connect sales and service once again is due to be completed in the fall of 2007.

Minnesota Big Dads 4th Annual Motorcycle Run

Minnesota Big Dad's, Inc. was founded by Robert Johnson in support of children with Cerebral Palsy. A volunteer organization consisting of nine members whose sole purpose is to provide therapeutic equipment to children living with Cerebral Palsy. Over the past 15 years, MN Big Dad's has supported hundreds of children with therapeutic equipment. Stillwater Motors is proud to be a sponsor of their 4th annual "Rev It Up For Charity" Motorcycle Run. Last year over 150 riders took part in the day long event which includes: Breakfast and Dinner at the Eagles Lodge before and after the bike tour through Prescott and Ellsworth. Any and all bike riders are invited to participate; a bus following the bikers is also available. Meet at Stillwater Eagles Aerie #94 Saturday, July 15th Breakfast starts at 8:00 and the bikes depart at 11:00. Dinner at live entertainment starts at 6:00. Call 651.439.5182 for more information on the event or to donate.

1949

GM sells the first "hard top" vehicle.

1940

On January 11th GM celebrates production of its 25 millionth car.

1950 Chevy introduces the Powerglide transmission, becoming the first competitor in the low price field to offer fully automatic shifting.

1954

GM celebrates production of its 50 millionth US made car (November 23rd).

1957 Frank Raduenz became the president of **Stillwater Motors**.

1961

Buick introduces the first American V6 passenger car engine.



1969 GM

the guidance navigation system to guide the Apollo astronauts to landing on the moon safely back to Earth.

1942

GM converts 100% of its production to the war effort. During WWII, GM delivers more than 12,300,000,000 worth of war material to lead the Allied war effort. Including airplane engines, airplanes and parts, trucks, tanks, marine diesels, guns, shells and miscellaneous products.



1953

The Chevy Corvette is introduced. It is the first volume production sports car and the first production car with a plastic body to be produced in quantity.



1958

Chevy introduces the El Camino designed to combine big car comfort with the utility of a pickup truck.

1966

GM introduces the industry's first energy absorbing steering column and standard front seat shoulder belts on 1967 models. Rear seat shoulder belts are available as a dealer installed option.



DAVE NELSON

Retires from Stillwater Motors

Dave Nelson started his automotive career with Stillwater Motors in August of 1959 as an apprentice. He was hired by Aurthur Raduenz and worked at the dealership’s old location on 324 Main St. in downtown Stillwater. Dave stayed with Stillwater Motors when it moved to its current location on Hwy 5 and 36, and has worked as an automotive technician for three generations of the Raduenz family.

Dave has seen Stillwater Motors through its last two remodeling

projects and has even stayed on part time to help through the transition to the brand new service center. Dave is sorry that he will not be moving into the new building as a technician, but he has remained a loyal hard worker helping the dealership in other ways.

Originally from Roberts, Wisconsin, Dave and his family moved to Stillwater in 1964. After his retirement, Dave plans to spend his time fishing, golfing, and spending time with his large family, including six grandchildren. Dave is going to miss everyone he worked with at Stillwater Motors and plans to stay in touch with all of his old co-workers.

Mike Richards, Service Director, said, “Dave is liked by all employees, customers, and anyone he meets. Dave is always willing to help others, that is what makes him so special.” Service Manager Arley Overturf said, “Even the excitement of the new addition is less because of Dave Nelson’s absence in the shop. Everyone at Stillwater Motors will miss Dave and we all hope him the best.”

Employee Anniversaries Richard Timm, 34 years; Robert Holter, 31 years; John Witthauer, 11 years; Martin Kasper, 8 years; Mary Ann Joyce, 8 years; Michael Mabry, 8 years; Frank Thurmer Sr., 6 years; Wendell Anderson, 4 years; Trent Wylie, 4 years; Jim McGibbon, 4 years; Gary Steffl, 2 years; Derek Trudeau, 2 years; Trever Phillips, 2 years; Lucas Lien, 2 years; Mark Anderson, 2 years; Walter Kilton, 2 years; Nicholas Skinner, 1 year; Jason Nucech, 1 year; Matthew Sauerwein, 1 year; Dane Swanson, 1 year.

manufactures
e and
systems which
ollo II
o man’s first
he moon and
o earth.

1972 Stillwater Motors

celebrates their 50th anniversary. A new combined lap and shoulder belt system with both light and buzzer to remind front occupants that they should “buckle-up” becomes standard on all **GM** cars.

1976 The “last” American convertible is built by Cadillac. Convertibles are reintroduced in 1984.

1987

Stillwater Motors was expanded to 33,000 feet.



1988

Chevy introduces its GEO line of small vehicles.



1996 The **Stillwater Motors** service department received another facelift with state-of-the-art amenities. With the introduction of the EV1, **GM** becomes the first automaker in modern times to market a specifically designed electric car to the public.

1971

GM designs and manufactures the mobility system for the Lunar Roving Vehicle which enables Apollo 15 astronauts to accomplish mankind’s first vehicular drive in the moon.



1973

Stillwater Motors moves to its current location on Hwy 5 and 36. **GM** manufactures the first production car equipped with an air cushion restraint system as an option.

1984

Stillwater Motors added new Jeeps to their inventory.

1989

GM offers its driver-side supplemental Inflatable Restraint System on fifteen models in 1990.



1992

Daniel Raduenz became the president of **Stillwater Motors** and continues the family tradition. **GM** celebrates production of its one millionth corvette.